



we love boats



2019

[www.cecchi.it](http://www.cecchi.it)

*powered by* C-Systems 10 10 CFS - SPINNAKER Yacht Varnish - Nautilus mpt

P R O D U C T S G U I D E



C-SYSTEMS EPOXY RESIN .....	4
C-SYSTEMS ADDITIVES.....	11
SPINNAKER YACHT VARNISH.....	14
NAUTILUS.....	18
NAUTILUS EPOXY FILLER .....	23
THINNER.....	24
DECO-DECK .....	25
BOAT CARE .....	26
NAUTILUS REMOVER.....	27
FABRICS AND PVC.....	28
ACCESSORIES.....	30
SKINDER.....	36



**+39 0584 383694**



**342 6398664**



**info@cecchi.it**

## BEFORE STARTING



Spending time for the maintenance of our boat is always enjoyable when a work is made with passion! Products we daily use at home show the symbols of risk and precaution for their use.

Our packages show the risks of the products: corrosive, harmful, irritant, flammable, etc ...

Material Safety Data Sheets are available on our website **[www.cecchi.it](http://www.cecchi.it)**

Some people develop allergies to certain substances.

An allergy is an altered and spontaneous reactivity of the organism to certain substances.

In case of such kind of disorders is almost certain that in the future a minimal contact or inhalation will reproduce the problem.

Immediately consult a physician to reduce the ailment.

The working environment has to be checked as well.

If the products are used indoor, the area must be well ventilated.

Always use a respirator to avoid breathing solvent vapours and dust. It is advisable to drink a glass of whole milk (not low-fat or skimmed) before starting any kind of job.

Wear comfortable and protective clothes and gloves whenever you handle the products , if necessary solvent resistant gloves.

If contact occurs with eyes and hands, immediately flush them with water. If discomfort persists, seek medical attention showing the details of the MSDS.

Never use solvent to remove paints or resin.

This is because after the use of solvents rests of products always remain trapped under the nails.

Always wash thoroughly with soap and warm water after using such products.

Do not smoke or eat during the application of the products. Always wash your hands before going to the bathroom.

It is important to use well protected power tools.

For a successful result, during the winter, always control the temperature of the product applied (avoiding the thermal inertia accumulated during the night) and the temperature of the surface (the part that we want to protect or paint).

To solve such kind of glitches, warm-up the products; it is sufficient an air-dryer, a thermo-fan or an oil radiator (remember to remove the cap for the pressure).

Warm-up and remove any presence of moisture accumulated during the night on the surface.

A good drying can be reached warming-up the area with hot air. Infrared quartz lamps completely sort this problem out.

Always use the adequate thinners and respect dilution suggestions shows on the labels.

Make sure that surfaces are clean, free of grease, wax or paraffin.

When using an epoxy resin there are some factors you should consider before overcoating it with another product.

During the drying process, the epoxy releases a blush to the surface called 'Amine Blush'.

This blush appears as a 'wax-like' film on the surface.

To remove it we recommend to thoroughly wash the epoxy with a sponge and then sand the surface; even better would be wet sand.

All the products have to be used in the right place.

Our products show the application advices and their purposes.

Please do not hesitate to contact your local Dealer or our offices to remove all doubts.

With a phone call you will save time and money.

We are at your boat disposal.



for products:

Store in a cool, dry place  
far from heat sources  
and sunlight  
(5° - 30°)



## PRODUCTS FOR YOUR BOAT

### C-SYSTEMS - EPOXY RESIN

C-Systems 10 10 CFS and ...Completely Free Solvent. Epoxy range with advanced mechanical features, suitable for many applications. To build, bond, fix, laminate, modify or create... Submitted to technical test at CTS in the presence of naval register surveyors. All that with 10 10 CFS and its additives. Also available other types of epoxy resins that meet several and more specific requests such as: Epoxy Tixo, ET108, ET40, Steel Blue, Core Bond, Epoxy Mix, 10 3, 10 10 UV Protection, H2 Resin (page 4)



### ADDITIVES

Inert "powders" to be mixed with Epoxy Resin giving rise to products with different characteristics according to the requirements of the application; additives make the resin thick like an ice cream. With additives and resin you can fill, bond, fix, build, protect and... (page 11)



### VARNISH

Protective filmogenic product, transparent, that enhances the grain of the wood protecting it at the same time from bad weather conditions. SPINNAKER range includes a wide set of one component varnishes and the new glossy two pack Polyurethane, it can overcoat existing one component varnishes applied at least some months earlier. (page 14)  
NAUTILUS range has two different finishing: gloss and satin, both recommended for exteriors. (page 21)



### PRIMER OR BASE

Nautilus Epoxy Primer. It's a two pack "anchoring" product to be applied prior the use of enamel or antifouling. It helps to homogenize the colour and/or to create the correct protection for the surface. Perfect to create a barrier between incompatible products or as first coat on metal or alloys. Choose a white coloured primer for white or yellow enamels; blue colour for red, green, black or yellow ones. (page 18)



### ENAMEL

Nautilus Polyurethane Enamel. Protective filmogenic pigmented product. To be applied on a base made with filler and primer. Our two pack enamels can overcoat existing one component applied some months earlier. (page 18)  
Nautilus Acrylic WB Enamel: water based enamel, gloss and satin finishing. (page 19)



### EPOXY FILLERS

Nautilus Epoxy Light and Fine Filler. Epoxy Fillers ideal for various applications. They can be used as fillers, to level surfaces and as protection during the osmosis cycle. Use above or under the waterline (page 23)



# PRODUCTS FOR YOUR BOAT

## THINNER

Specific thinner for our varnishes.  
They don't modify the features of the products.  
Use the thinner if necessary only.  
(page 24)



## DECO-DECK

**Deco-Deck WB** one component water based polyurethane elastic coating; **Deco-Deck GTS** one component polyurethane elastic transparent coating.  
(page 25)



## BOAT CARE

High quality products for cleaning and maintain your boat.  
Teak & Wood cleaner, Teak Oil W.B., Invisible Deck Protection, Fiberglass Cleaner, Cloth Protection.  
(page 26)



## NAUTILUS REMOVERS

**NAUTILUS RUST REMOVER** and **NAUTILUS PAINT REMOVER** (page 27)



## FABRICS AND PVC

Glass, carbon, aramidic or hybrids (if composed by two or more types of yarn) are the base of the new nautical industry.  
Plan, unidirectional or multiaxial (biaxial, triaxial...)  
(page 28)



## ACCESSORIES

A huge range of accessories is at your disposal to work with competence.  
(page 30)



### TOOLS KEY



BRUSH



ROLLER



THOOTHED SPATULA  
FINE/LARGE



CASTABLE



SAUSAGES  
RUBBER GUN



SMALL  
BRUSH



SPRAY  
GUN



TEMPERED  
STEEL BLADE  
SPATULA



TWO  
COMPONENT  
GUN



CARTRIDGE  
RUBBER GUN

# 10 10 CFS

10 10 CFS epoxy resin, multifunctional extremely reliable to fix, build, bond, laminate, protect, fill or create with wood and fiberglass. 100% solid content. CFS: Completely Free Solvent.


It has an outstanding quality standard and thanks to its fluidity it exploits a series of additives which allow its use in every type of work to meet every need like:

- Bond wood-wood, wood-fiberglass, fiberglass-fiberglass and heterogeneous materials.
- Laminate fabrics of glass, carbon, kevlar onto wood and onto fiberglass, etc. etc.
- Structural Filler adding our additives: Microfiller Powder, Addensante n.2 or Natural Microfibers and Mineral Microfibers.
- Filler
- Undercoat for painted or varnished, transparent or otherwise wood.
- Anti-osmosis undercoat,
- Osmosis repair undercoat.

C-Systems 10 10 CFS has three types of hardeners (standard, slow and fast) which can also be mixed together to obtain an intermediate one, allowing adjustment of the working times to the climatic conditions.

It is advisable to use the Slow type in Spring or Summer (in any case never with temperature below 15°C).

Dosing pumps are available for all the packages except for the 1,1 Kg (packed in a can). Pumps dispense in single doses the correct resin and hardener.

Weight Ratio	Pot Life at 20°C	Drying times at 20°C	Tools
2:1	Fast 12'-16' Standard 15'-20' Slow 25'-30'	Fast 8-10 h Standard 10-12 h Slow 18-20 h	
(for 200 gr (A+B mix) poured in a tray)			

## THEORETICAL COVERAGE

For a perfect bonding the resin must be applied on both surfaces.

The yield per square meter varies from 300 to 500 g/m².

(i.e.: 150 g on one side, 150 g on the other)

Please remember that the yield can change according to the roughness of the surface.

12 -15 smq/kg if applied as primer/base

article	package	pieces in a box
code 1116	750 g (500 g A + 250 g B)	12
code 1103	1,1 kg (734 g A + 366 g B) can	9
code 1115	1,5 kg (1 kg A + 0,5 kg B)	9
code 1105	4,5 kg (3 kg A + 1,5 kg B)	3
code 1126	30 kg (20 kg A + 10 kg B)	1

### Note:

Available upon request Standard, Fast or Slow hardener for 4,5 kg and 30 Kg packages.



pack. 750 g (500 g A + 250 g B)



pack. 1,5 kg (1000 g A + 500 g B)



pack. 1,1 kg (734 g A + 366 g B)



pack. 4,5 kg (3 kg A + 1,5 kg B)



pack. 30 kg (20 kg A + 10 kg B)

For more information about the application of 10 10 CFS on wooden or fiberglass boat please visit our website: [www.cecchi.it](http://www.cecchi.it)



## PUMPS AND MINIPUMPS

In the 750 gr and 1,5 kg are available minipumps dispensing the correct resin and hardener quantity.  
In the 30 kg (20 kg A + 10 kg B) and in the 4,5 kg (3 kg A + 1,5 kg B) packs it is possible to fit the dosing pumps to speed-up and secure the mixing and work.

**Note:** In order to maintain the correct mixing ratio 2:1 by weight, always dispense 1 dose of component A and 1 of component B.

With dosing pumps application is easier.  
Above instructions are valid for all types of dosing pumps.  
Dosing pumps are randomly checked.  
It's **NECESSARY** to verify the correct quantity of resin dispensed by the pumps at the first use, use a scale to do it.  
Correct proportion by weight is 2:1, 100 g A + 50 g B.

article	package for 10 10 CFS
code 1073	for 750 g
code 1071	for 1,5 kg
code 1062	for 4,5 kg
code 1063	for 30 kg

article	package for 10 10 UV Protection
code 1072	for 750 g
code 1074	for 1,5 kg
code 1064	for 4,5 kg

750 g



art. 1073 Minipumps for 750 gr pack:

1,5 Kg



art. 1071 Minipumps for 1,5 kg pack:

4,5 Kg



art. 1062 Pumps for 4,5 kg pack:

30 Kg



art. 1063 Pumps for 30 kg pack:

### KIT 10 10 CFS

The best gift for you and your boat for any type of fixing or refitting.  
In this kit products are discounted by 25%: a good reason to have at your disposal the products of the C-Systems range.

Content of the Kit:

- 1 Kg C-Systems 10 10 CFS comp. A
- 0,5 Kg C-Systems 10 10 CFS comp. B
- 1 set of minipumps
- 3 plastic cans
- 0,5 l Natural Microfibers
- 0,5 l Addensante no. 2
- 0,5 l Microfiller Powder
- 100 gr Mineral Microfibers
- 1 stick
- disposable brushes (12 pieces)
- disposables gloves
- 1 3M 9914 respirator
- 1 Cecchi booklet

Kit is also available with our three DVDs.

article	package	pieces in a box
code 1121	KIT without DVD	1
code 1122	KIT with 3 DVDs	1



# EPOXY RESIN


## 10 10 UV PROTECTION

Epoxy system UV rays resistant, mixing ratio 2:1 by weight (100 gr A + 50 gr B). 100% solid content. To protect carbon, wood, fiberglass and other materials finishing. To be used at constant temperatures over 15°C. Is suggested the application of 2 coats of trasparent varnish (one or two components) to protect it.

### Note:

Do not use at temperature below 15°C

article	package	pieces in a box
code 1117	750 g (500 g A + 250 g B)	12
code 1125	1,5 kg (1 kg A + 0,5 kg B)	9
code 1107	4,5 kg (3 kg A + 1,5 kg B)	3


Weight Ratio	Pot Life at 20°C	Drying times at 20°C	Tools
2:1	15-35 minutes to be used at constant temperatures over 15°C	18 - 20 h	



## 10 10 SUPER FAST

Ultrafast epoxy system (5 minutes pot life, 20 minutes grip). Mixing ratio 1:1 by weight. 100% solid content. Outstanding product for a very fast and firm bonding and a very reliable and professional intervention. For wood fiberglass and other materials.

article	Package	Pieces in a box
code 1101	800 g (400 g A + 400 g B)	6


Weight Ratio	Pot Life at 20°C	Drying times at 20°C	Setting time 24 h	Tools
1:1	5 - 10 minutes	10 - 12 minutes		



## 10 10 CLASSIC

Epoxy system mixing ratio 1:1 by volume, very long pot life and a slightly honey-like mixture consistency. It is particularly suitable to work on surfaces not perfectly dry like wood. If charged with Microsfere is suitable for casting on hollow rudders (in particular for boxed or inaccessible parts). C-Epoxy Thinner is the specific thinner for 10 10 Classic if applied on wet or damaged woods. Dilute 50% and let the surface dry (some days). Properly sand; following coat of 10 10 Classic doesn't have to be diluted.

article	package	pieces in a box
code 1001	1 L (0,5 L A + 0,5 L B)	9

Mixing ratio by volume	Thinner/ tools cleaning	Thinner percentage	Pot Life at 20°C	Drying times at 20°C	Tools
1:1	C-Epoxy Thinner	50% for wetwoods	1 h	18 h	







# EPOXY RESIN

## H2 RESIN

Epoxy resin homologated to build and protect fiberglass water tanks, wood, cement and metal (in this case a previous application of Nautilus Epoxy Primer is recommended). It can also be used to fix fish tanks. Same bonding features as 10 10 CFS. Mixing ratio 2:1 by weight (100 gr A + 50 gr B). 100% solid content. Suitable for fabrics lamination and wood bonding. Mixable with all C-Systems additives. Certification no. 3027/2008 for food conservation, issued by Stazione Sperimentale Industria Conserve Alimentari Parma.

article	package	pieces in a box
code 1163	1,5 kg (1000 g A + 500 g B)	9
code 1165	4,5 kg (3 kg A + 1,5 kg B)	3
code 1170	30 kg (20 kg A + 10 kg B)	1



Weight ratio	Pot Life at 20°C	Drying times at 20°C	Tools
2:1	18 - 30 minutes	12 - 15 h	 



## 10 3

Epoxy system, mixing ratio 10:3 by weight. Suitable for vacuum formed construction, prototypes realization and competitive products and all the application where firmness and lightness are the key. Indicated for those projects where a long pot life and very high mechanical performances are required.

article	package	pieces in a box
code 1003	13 kg (10 kg A + 3 kg B)	1
code 1009	26 kg (20 kg A + 6 kg B)	1


Weight ratio	Pot Life at 20°C	Drying times at 20°C	Tools
10:3	10-14 minutes (fast Hardener)	2,5-3,5 h + post curing	 
	110-130 minutes (slow Hardener)	8-9 h + post curing	



## STEEL BLUE

Two components self-extinguishing free-solvent epoxy system, filled with abrasive inerts. It can be cast or used to fill concealed spaces. Thanks to its high dimensional stability and the practically zero shrinkage (from 0.2 to 0.7 per thousand) this resin can be cast on metal, wood, and fiberglass. It has a compression resistance higher than 1300 kg/cm<sup>2</sup> and is indicated for works on metal where supports and stands have to be aligned. Specific mixer is supplied upon request. C-Systems Steel Blue has been submitted to technical test with CTS (Centro Tecnologico Sperimentale) in the presence of **ABS** and **Rina** surveyors.

article	package	pieces in a box
code 1150 blue	9,010 kg (8535 g A + 475 g B)	1
code 1155 orange	9,010 kg (8535 g A + 475 g B)	1

Weight ratio	Pot Life at 20°C	Gelation time at 20°C	Setting time at 20°C	Volume	Tools
100:5	25' - 30'	2,5 - 3,5 h	10:20 h	4,829 L	




blue  orange 

# EPOXY RESIN

## EPOXY TIXO


Epoxy system, mixing ratio 1:1 by weight. Thixotropic texture (thick like grease), long pot life, exceptional filling qualities for non-corresponding parts. Suitable for bonding large decks (wood-wood, fiberglass - wood, fiberglass - fiberglass) and similar processes.

article	package	pieces in a box	
code 0683	1,5 kg (750 g A + 750 g B)	9	
code 0685	5 kg (2,5 kg A + 2,5 kg B)	3	
<b>Weight ratio</b>	<b>Pot Life at 20°C</b>	<b>Setting times 20°C</b>	<b>Tools</b>
1:1	35 - 40 minutes	12 h	



## ET 108

Two components epoxy resin, mixing ratio 100: 80 by weight, same features as Epoxy Tixo but with a 25% higher TG (glass transition). 100% solid.

article	package	pieces in a box	
code 0678	1,5 kg (834 g A + 666 g B)	9	
code 0679	5 kg (2278 g A + 2222 g B)	3	
<b>Weight ratio</b>	<b>Pot Life at 20°C</b>	<b>Setting times 20°C</b>	<b>Tools</b>
100:80	30 - 35 minutes	12 h	




## ET 40

Epoxy system, mixing ratio 100:45 by weight. Similar to Epoxy Tixo but with a higher bonding power: 300 kg/cm<sup>2</sup>. Suitable for structural bonding of wide areas even of different materials like wood, fiberglass, metal and composite materials. Perfectly firm and with a high thermal shock resistance. It perfectly sets even with temperature below 20°C. ET40 is also available in 2:1 cartridge (400 cc) with the name of EPOXY MIX 140.

article	package	pieces in a box
code 0681	1,5 kg (1035 g A + 465 g B)	1

*Note: bigger package available*

<b>Weight ratio</b>	<b>Pot Life at 20°C</b>	<b>Gelation times at 20°C</b>	<b>Tools</b>
100:45	35 - 45 minutes	7 - 8 h	




# EPOXY RESIN

## CORE BOND

Two components epoxy system, castable.  
Suitable to restructure the inside of fiberglass decks, to fill and restructure rudders, expanded omega and side members in fiberglass constructions. Ideal to give new structure to sandwich constructions. Its long pot life allows a capillary penetration even on narrow spaces, creating a single structure. Specific mixer is supplied upon request.  
Also available 3X or 5X version.

orange ●

article	package	pieces in a box
code 1160	2 kg (1,6 kg A + 0,4 kg B)	1

Weight ratio	Pot Life at 20°C	Gelation time at 20°C	Setting time at 20°C	Volume	Tools
4 : 1	40 - 60 minutes	6 - 8 h	24 - 36 h	2,4 L	





## GEL COAT LIGHT

Epoxy gel coat, solvent free, very low specific weight.  
White or yellow colored, with a long pot life.  
Very easy to apply; it is possible to get high thickness even on vertical surfaces. Suitable for bilges, lockers, it can also be used to eliminate the pungent odor of the fiberglass. Perfectly homogenize the product before its application. Specific mixer is supplied upon request.

yellow ● white ○

article	package	pieces in a box
code 0970	white 2,5 kg (2000 g A + 500 g B)	1
code 0971	yellow 2,5 kg (2000 g A + 500 g B)	1

Weight ratio	Pot Life at 20°C	Gelation time at 20°C	Setting time at 20°C	Coverage	Tools
100:25	50 - 60 minutes	4-5 h	18-24 h	4-6 mq with package 2,5 kg (in relation with the roughness of the surface)	 






# C-SYSTEMS - EPOXY RESIN

## EPOXY MIX 110


A two component fast epoxy system in twin-cartridge, mixing ratio 1:1 by volume (400 cc size A+B), lightly tixotropic. Setting time of about 20 minutes. Ideal for composites, wood, fiberglass, metal and many others materials. Lap shear strenght (ASTM D 1002) on steel, after 24 h at 25°C, more than 60 kg/cm2, cured after 2 h at 50°C more than 110 kg/cm2.

Weight ratio	Pot Life at 20°C	Setting time at 20°C	Tools
1:1	3-5 minutes	20 minutes	



## EPOXY MIX 130


A two component epoxy system in twin-cartridge, mixing ratio 2:1 by volume (400 cc size A+B), black colour, lightly tixotropic, long pot life. Suitable for carbon composites for its strenght resistance. Lap shear strenght (ASTM D 1002) on aluminum, after 24 h at 25°C, more than 200 kg/cm2, cured after 2 h at 80°C more than 300 kg/cm2.

Weight ratio	Pot Life at 20°C	Setting time at 20°C	Tools
2:1	15-25 minutes	3-4 h	



## EPOXY MIX 140

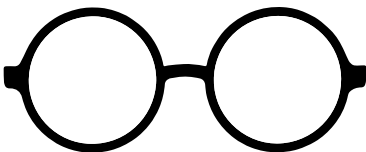
A two component epoxy system in twin-cartridge, mixing ratio 2:1 by volume (400 cc size A+B), straw yellow colored, lightly tixotropic. Suitable for carbon composites, fiberglass, wood, metal, ceramic, marble and other materials. Lap shear strenght (ASTM D 1002) on aluminum, cured after 5 h at 70°C more than 255 kg/cm2; on steel 250 kg/cm2, cured after 5 h at 70°C more than 350 kg/cm2.

Weight ratio	Pot Life at 20°C	Setting time at 20°C	Tools
2:1	10-14 minutes	2-3 h	



article	package	pieces in a box
code 0686	MIX 110 400 ml (200 ml A + 200 ml B)	3
code 0688	MIX 130 400 ml (200 ml A + 200 ml B)	3
code 0689	MIX 140 400 ml (200 ml A + 200 ml B)	3

## TABLE USE ADDITIVES



	Microfibre naturali (addensante n° 1)	addensante n° 2	Microfibre minerali	Microfibre bianche	Microfiller Powder	Microst. fenoliche	A20
scart or fish joint bonding	★★★★★	★★★★★	★★	★	★★	★	★
bonding surface	★★★★★	★★★★★	★★★	★★	★★★★	★★	★★★
aesthetic wood filling	★★★	★★★★	★	★★	★★★★	★★★	—
structural wood filling	★★★★★	★★★★	★★★★	★★	★★★★	★★★	★
aesthetic fiberglass filling	★★	★★★★	★★★	★★★	★★★★★	★★★	★
structural fiberglass filling	★★★	★★★★	★★★★★	★	★★★★	★	★★
edges, joints, ribbing	★★★	★★★★★	★★★	★★★★	★★★★★	★★★★	★
ease of sanding	★★★	★★		★★★★	★★★	★★★★★	—
lamination	★	★★★★★		★★	★★	★★	★★★★
Increased density (to make thicker) when put on the brush or roller	—	★★★★★	—	—	★	—	★★★★★

Legend ★★★★★ excellent (highest grade) ★ just acceptable

# C-SYSTEMS - ADDITIVES

## ADDENSANTE N°2

It is a very fine, light white powder that thickens liquid materials.  
With a very low specific weight.

- Used as a thickener with 10 10 CFS or 10 2 perfectly bonds wood with wood, it fills very small parts.
- To obtain thixotropic resin, thick like an ice cream.
- To bond two flat surfaces forming a T shape.
- To join angle surfaces.
- To bond wood-wood, wood-fiberglass, fiberglass-fiberglass.

opalescent 

article	package	pieces in a box
code 2301	1,5 L	6
code 2305	5 L	4
code 2302	25 L	1



% of additive by  
volume depending  
on the thickness

2-4 % about

Tools



## NATURAL MICROFIBERS

It is a very fine and filamentous white powder, with a low specific weight, to be added to the mixed epoxy resin increasing its density.

- To connect angled surfaces with a thread.
- To fill open screw holes on wood.
- To fix small areas of peeled plywood, dents and missing edges of wood.

The "dry" mix made with Natural Microfibers and wooden powder (in about 5 to 1 ratio) when added to 10 10 CFS helps to carry out repairs on "exposed" woods.

creamy white 

article	package	pieces in a box
code 2005	1,5 L	6
code 2025	5 L	4
code 2055	25 L	1



% of additive by  
volume depending  
on the thickness

5 - 15 % about

Tools



## MINERAL MICROFIBERS

It is a very fine filament, like crushed glass, premixed, to remain also vertical without sagging if added to 10 10 CFS.

When mixed with 10 10 CFS takes a structure very similar to the fiberglass but more resistant.

- To be cast on broken stachion basements
- To rebuild chipped gelcoat or fiberglass
- For osmosis damage repairs.

greenish/white 

article	package	pieces in a box
code 2102	0,5 kg	6
code 2103	2,5 kg	1



% of additive by  
weight depending  
on the thickness

50-70% about

Tools

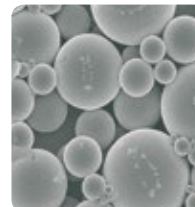


## MICROFILLER POWDER

Containing white microspheres and other additives it gives to the mix made with 10 10 CFS a thixotropic texture, if applied on vertical surfaces it doesn't sag. Ultralight filler, its structure can be compared to the squid pen as it is very light, resistant, unalterable and ideal to make beams. A mm3 of Microfiller Powders contains from 5000 to 15000 not communicating cells that create a perfect isolation from water and humidity.

white 

article	package	pieces in a box
code 2311	1,5 L	6
code 2310	5 L	4
code 2312	25 L	1



% of additive by  
volume depending  
on the thickness

70% about

Tools



## MICROFILLER BLACK

A little more heavier of the Microfiller Powder, black coloured. Ideal to fill in the seams on striped plywood; on wooden floor of houses or shops, when the intention is to evoke the "black of the rubber". Always apply a previous coat of 10 10 CFS before using Microfiller Black plus 10 10 CFS.

black ●

article	package	pieces in a box	% of additive by volume depending on the thickness
code 2315	5 L	1	50 - 70% about

Tools



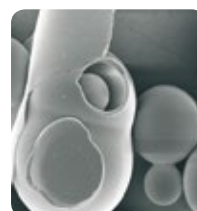
## PHENOLIC MICROSPHERES

Ideal for wood, fiberglass and aluminum. These microspheres of phenolic origin are brown coloured, lighter than Microfiller Powder. Easy to sand with a very fine grain.

brown ●

article	package	pieces in a box	% of additive by volume depending on the thickness
code 2401	1,5 L	6	40% about

Tools



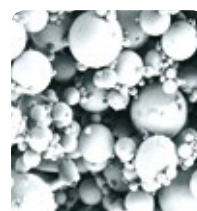
## WHITE MICROSPHERES

Glass spheres of high quality and purity, they are empty and very light. If added directly to the mixed resin (A+B) they remarkably reduce their specific weight (they weigh less than 300 g/l) and because of this ratio they can be poured like a yogurt. Ideal for casting into hollow or slightly concave parts where no condensation can appear or backwatering.

white ○

article	package	pieces in a box	% of additive by volume depending on the thickness
code 2105	1,5 L	6	50-70% about
code 2225	5 L	4	
code 2250	25 L	1	

Tools



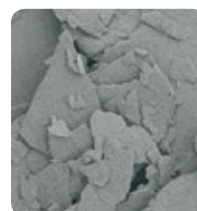
## A20 MICROSHIELD

Osmosis treatment additive, black colour, graphite based, high quality. To be added in a proportion of 20% to C-Systems 10 10 CFS or C-Systems 10 2. Once added to the mixed resin it gives a thixotropic texture without sagging (300 microns). High resistance to scratches and crazing, it saturates any kind of capillarity. Mixing ratio about 20 gr of A20 and 100 gr of resin.

black graphite ●

article	package	pieces in a box	% of additive by weight depending on the thickness
code 1019	400 g	6	20% about
code 1020	1 kg	6	

Tools



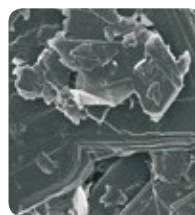


## C-SYSTEMS - ADDITIVES

### A30 MICROSHIELD

It has got the same destination of A20.  
It is white and it emphasizes effectively the application contrast.  
Mixing ratio about 30 gr of A30 100 gr of resin.

white sand 



article	package	pieces in a box
code 1023	400 g	6
code 1021	1 kg	6

% of additive by weight  
depending on the thickness

30% about

Tools



### NOFIRE POWDER

Micronized powder. When added to 10 10 CFS it creates a cover that once dry doesn't spread the flames. Ideal for engine rooms or adjacent rooms. Mixing ratio 100-150% by weight.  
Choosing the higher percentage of product No Fire Powder becomes self extinguishing. Apply first coat with fine thooted spatula and complete with a short haired brush.

article	package	pieces in a box
code 2404	2 kg	6

% of additive by weight  
depending on the thickness

100-150% about

Tools



### ANTISKID POWDER transparent

Antiskid Powder its a white powder finely micronized.  
Suitable for one or two pack varnish or enamel. Once added to the product it creates an anti-slip area and it is completely transparent. One package of Antiskid Powder is adequate for 1 liter of product already diluted (enamel or varnish).  
Easily mixable, it is invisible and it remains suspended for a quite long time.

article	package	color	pieces in a box
code 0156	70 g	fine transparent	27
code 0159	70 g	rough transparent	27



### COLOUR PASTE

Coloured paste that colors the resin 10 10 CFS (A+B).  
Add a percentage of 5-10% (by weight) to the mix.  
Adding C-Colour Paste to the resin; the result is a mix with a colour contrast that simplify the application.

article	package	color	pieces in a box
code 9500	200 g	black	1
code 9501	200 g	white	1
code 9507	200 g	yellow	1
code 9508	200 g	green	1
code 9514	200 g	orange	1



# SPINNAKER YACHT VARNISH




## SPINNAKER STANDARD

Transparent gloss one pack varnish, easy to apply, very high class and performance. When applied it has a high gloss and long lasting film, it doesn't turn yellow, it withstands to atmospheric agents and saltiness. It is very economical because of its high yield, its durability over the years and for enhancing the craftsmanship. Ideal for the maintenance of varnished previously applied.

gloss interiors and  
exteriors  
high UV protection



article	package	pieces in a box
code 0102	0,5 L	24
code 0103	1 L	12

Thinner/tools cleaning	Thinner percentage	Dustdry at 20°C	Recoatibility at 20°C	Coverage	Tools
White Spirit	brush / roller 5% spray gun 20%	2 - 3 h	24 h	15-16 mq/L	  




## SPINNAKER GOLD FASHION

Transparent gloss gloss varnish. Highly resistant to bad weather conditions and to marine environment, where the maintenance of the woods requires an extreme protection. Enhances the grain and the shade of the wood. The dark colour becomes transparent once applied. COD technology (Coat over Dry).

gloss interiors and  
exteriors  
UV protection  
COD



article	package	pieces in a box
code 0152	0,5 L	24
code 0153	1 L	12

Thinner/tools cleaning	Thinner percentage	Dustdry at 20°C	Recoatibility at 20°C	Coverage	Tools
White Spirit	brush / roller 5% spray gun 20%	2 - 3 h	24 h	14-16 mq/L	  




## SPINNAKER GOLD FASHION MAT

Mat version of the Gold Fashion, with same features. It was born to be applied both for external and internal use and, of course, it has got the same reliability and resistance. COD technology (Coat over Dry). If applied on exteriors is recommended to prepare a base applying 3 - 4 coats of gloss varnish. Work will be finished then with 2 coats of Gold Fashion MAT.

mat for exteriors  
and interiors  
UV protection  
COD



article	package	pieces in a box
code 0154	1 L	12

Thinner/tools cleaning	Thinner percentage	Dustdry at 20°C	Recoatibility at 20°C	Coverage	Tools
White Spirit	brush / roller 5% spray gun 20%	2 - 3 h	24 h	15-16 mq/L	  

# SPINNAKER YACHT VARNISH




## SPINNAKER POLYURETHANE

One pack gloss varnish, with a hard film which is also scratch resistant. Ideal for mast, boom and bowsprit. It perfectly solves varnishing during the winter when it's cold.

gloss exteriors and interiors  
UV protection



article	package	pieces in a box
code 0132	0,5 L	24
code 0133	1 L	12

Thinner/tools cleaning	Thinner percentage	Dustdry at 20°C	Recoatibility at 20°C	Coverage	Tools
White Spirit	brush / roller 5-10% spray gun 10-20%	1,5 h	16 - 24 h	15-18 mq/L	  

## SPINNAKER POLYURETHANE 2




Trasparent finish "super clear" polyurethane based with a high UV rays protection. Ideal finishing for protecting epoxy resin, it is specific for 10 10 UV Protection.

It can overcoat existing one component varnishes applied 3-4 months earlier, we recommend to test it on a small surface before the application. Easy to apply by brush.

gloss exteriors and interiors  
UV protection



article	package	pieces in a box
code 0135	750 ml	6
code 0140	3 L	1

Thinner/tools cleaning	Thinner percentage	Dustdry at 20°C	Recoatibility at 20°C	Coverage	Tools
Spinnaker Polyurethane 2 Thinner	brush / roller 5-10% spray gun 10%	2 h	24 - 48 h	12 mq/L	  




## SPINNAKER EGGSHELL

One pack mat thixotropic dense. It gives wood a fantastic silkiness maintaining the warm interior colours unchanged, eliminating light reflections and glare. COD technology (Coat over Dry). It is resistant to boiling water, hot surfaces.

mat for interiors  
UV protection  
COD



article	package	pieces in a box
code 0142	0,5 L	24
code 0143	1 L	12

Thinner/tools cleaning	Thinner percentage	Dustdry at 20°C	Recoatibility at 20°C	Coverage	Tools
White Spirit	brush / roller 5% spray gun 10-20%	2-3 h	24 h	15-16 mq/L	  



# SPINNAKER YACHT VARNISH




## SPINNAKER POLYURETHANE SATIN

One-component interior varnish with beautiful semi-gloss finish, thixotropic, COD technology (Coat over Dry). Easily applicable on new woods or already varnished with other products. It gives wood a fantastic silkiness and erase the small defects, enhancing the grain of the wood and its shades. It is resistant to hot surfaces, cosmetics and alcohol. Once dry its film is less mat than the Eggshell one.

satin interiors  
UV protection  
COD



article	package	pieces in a box
code 0172	0,5 L	24
code 0173	1 L	12

Thinner/tools cleaning	Thinner percentage	Dustdry at 20°C	Recoatibility at 20°C	Coverage	Tools
White Spirit	brush / roller 5% spray gun 10 - 20%	1 h	12-16 h	12-14 mq/L	  




## SPINNAKER WOOD PROTECTION CLEAR

Rich of UV filters, it doesn't create any film on the surface. It protects and enhances the wood. Deeply penetrates in the fiber, very easy to dry. Its own light colour makes it also ideal for successive varnishing. The second coat might be applied in the same day and the third on the second day and the wood can be walked on. COD technology (Coat over Dry). Ideal to lightly colour the wood coats after coats.

satin exteriors  
and interiors  
UV protection  
COD



article	package	pieces in a box
code 0183	1 L	12

Thinner/tools cleaning	Thinner percentage	Dustdry at 20°C	Recoatibility at 20°C	Coverage	Tools
White Spirit	spray gun 5-10%	2 h	5-6 h	14-16 mq/L	  




## SPINNAKER WOOD PROTECTION SUPER CLEAR

It is like SPINNAKER WOOD PROTECTION, but it doesn't contain the "light" coloring. Once applied it creates a wet effect with high protection against the UV filters. Ideal as coat for sittings, floorboards, underdeck openings, frames of teak and other visible woods. COD technology (Coat over Dry).

satin exteriors  
and interiors  
UV protection  
COD



article	package	pieces in a box
code 0184	1 L	12

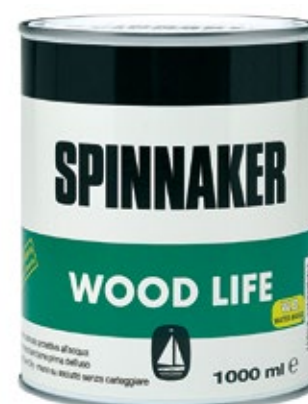
Thinner/tools cleaning	Thinner percentage	Dustdry at 20°C	Recoatibility at 20°C	Coverage	Tools
White Spirit	spray gun 5-10%	2 h	5-6 h	14-16 mq/L	  

# SPINNAKER YACHT VARNISH



## SPINNAKER WOOD LIFE WB water based

Special mixing of products. It makes a barrier against external weather conditions (heat, cold, frost, sun, rain, snow, smog, etc.), it endogenously protects the wood. It enhances the beauty of the wood.  
It is also ideal for an easy maintenance of chalets, fences, pergolas and for the protection of window frames, doors, outdoor wooden furniture.  
Use: Water based clear satin protection for wood (exterior, interior).  
Dilution: ready for use. If necessary, add 5-12% of water.  
Application: by brush or roller.  
Number of coats: 3 - 4 by brush or roller, each of at least of 100 wet microns.  
Fast drying: 3-5 hours.  
Apply in well-ventilated area, relative humidity below 85%. Interval between each coat: within 24 h without sanding (COD – coat over dry).  
In good weather condition apply 2-3 coats per day.  
Solid content: more than 40%.  
It is possible to apply solvent-based products such as SPINNAKER range after one month; test before the application.

satin water based  
exteriors  
and interiors



article	package	pieces in a box
code 0125	1 L	12

Thinner/tools cleaning	Dustdry at 20°C	Recoatibility at 20°C	Coverage	Tools
Demineralized Water	3-5 h	5-6 h	12-14 mq/L	 



## SPINNAKER MAHOGANY

Is a wood stain mahogany coloured. Suitable to paint new or renewed woods. Mix 5 up to 10% of the product with SPINNAKER Yacht Varnish one or two packs.  
Ideal to color or to homogenize new parts of wood, for maintenance or for wood restoring. SPINNAKER Mahogany can't be mixed with SPINNAKER WOOD LIFE WB.  
Stir well before use it.

wood stain  
exteriors and  
interiors



article	package	pieces in a box
code 0185	0,5 L	6

Thinner/tools cleaning	Percentage to be added to varnish	Dustdry at 20°C*	Recoatibility at 20°C*	Coverage	Tools
White Spirit	max 5-10%	2 h	3-4 h	12-14 mq/L on bare wood	 

(\*) if used as wood stain

For more information about the application of SPINNAKER on wooden boat please visit our website: **[www.cecchi.it](http://www.cecchi.it)**

# NAUTILUS PRIMER AND ENAMELS




## NAUTILUS EPOXY PRIMER

Two-pack multifunctional paint.

Suitable as anticorrosive or base for subsequent paint schedule on iron, caston iron, aluminum, stainless steel, lead, galvanised parts and metals in general (flaps, shafts, rudders supports and propeller shafts). It can also be applied on fiberglass during the osmosis cycle. Epoxy Primer can also be used as Wash Primer, dilution 20-25%. White version has been enriched with A30 Microshield, color is off-white, coverage with second coat or cycle within 30 days without sanding.

article	package	pieces in a box
code 0802	white 750 ml	9
code 0803	white 3 L	1
code 0804	blue 750 ml	9



Pot life at 20°C	Mixing ratio by weight 5:1	Thinner/tools cleaning	Thinner percentage	Dust dry at 20°C	Touch dry at 20°C	Recoat ability at 20°C	Coverage	Tools
10 h	Mixing ratio by volume 3:1	Epoxy Thinner	brush/roller 5-15% spray gun 20% up 30 days without sanding	20 minutes	3 h	after 16-24 h until 30 gg	8-10 mq/L	  

off white  blue 




## NAUTILUS POLYURETHANE ENAMEL

Two-pack polyurethane enamel used to protect and to give a very shiny finishing to all the works made on the boat with a longlasting brilliance. Easy application.

Suitable for wood, fiberglass and metal surfaces if adequately prepared. On DVD no. 3 or on YouTube you can find the technical demonstration of its application by roller, brush and spray-gun.

article	package	colore	pieces in a box
code 0864	750 ml	ice white RAL 9016	9
code 0870	1,5 L	ice white RAL 9016	6
code 0860	750 ml	ivory white RAL 9010	9
code 0869	1,5 L	ivory white RAL 9010	6
code 0863	750 ml	blue RAL 5011	9
code 0865	750 ml	red RAL 3001	9
code 0867	750 ml	yellow RAL 1003	9
code 0866	750 ml	black RAL 9005	9
code 0871	750 ml	grey RAL 7035	9
code 0868	750 ml	green RAL 6005	9



Pot life at 20°C	Mixing ratio by volume	Thinner/tools cleaning	Thinner percentage	Dust dry at 20°C	Recoat ability at 20°C	Coverage	Tools
6 h	2:1	Nautilus Polyurethane Thinner	brush/roller 10-30% spray gun 30%	40 minutes	24 h	18-20 mq/L	  

ice white  ivory white  grey  blue  black  red  yellow  green 





# NAUTILUS PRIMER AND ENAMELS

## NAUTILUS ACRILIC WB ENAMEL

Acrylic water based enamel, one component. White colored gloss or satin.  
Ideal for interior refittings, for wood surfaces that need to be covered by a colored paint due their quality. Also for exterior use. It gives a high brightness to small locations and beautify all the work. Suitable to be applied in the bilge if previously coated with 10 10 CFS or other epoxy systems.

article	package	pieces in a box
code 0873	gloss 1 L	12
code 0875	satin 1 L	12

Drying times at 20°C	Thinner/tools cleaning	Thinner percentage	Dustdry at 20°C	Coverage	Tools
gloss 12 h satin 6 h	Demineralized water	brush/roller 5%	gloss 30' satin 30'	12 mq/L	 

white 

water based  
enamel





info@cechi.it

19

## NAUTILUS CLASSIC PRIMER

Chlorinated rubber based insulating marine primer, ocre-gold colored, one-component.  
Ideal to insulate old coats of antifouling forming crusts or craters, or when is not easy to know the compatibility of the products.  
Application: sand with a sander with a dust vacuum (slow speedness, low pression or the product dries up), paper 40-60. Smooth the surface to homogenize it, apply one or two coats of Nautilus Classic Primer. Solid content 50% of applied thickness. Apply the product by roller, uprightly and stern-bow direction.

article	package	pieces in a box
code 0800	1 L	12

Thinner/tools cleaning	Thinner percentage	Dustdry at 20°C	Recoatibility at 20°C	Coverage	Tools
Nautilus Antifouling Thinner	brush/roller 5-10%	1 h	24 h	10-12 mq/L	 

ocra-gold 



# NAUTILUS ANTIFOULING SHAFTS/PROPELLERS

## NAUTILUS DRIVE PRIMER

Two pack yellow primer for shafts, propellers, flaps, stern drives, surface drives. Summer or Winter version available. Surface must be clean, dry and free of grease (clean with Boat Life Bilge Cleaner if necessary). Sand the surface with 80/100 grit sandpaper.

Prepare the mix at least 10 minutes before the application. Very low VOC (Volatile Organic Compound), it must be overcoated in very short time. Apply a coat of antifouling after 2-3 hours, if the product is applied the day before the surface needs to be lightly sanded with smooth 3M Scotch Brite or 150 sandpaper.



package 260 g

article	color	package	pieces in a box
code 0832	CL210 winter	260 g	1
code 0835	CL210 winter	520 g	1
code 0831	CL210 winter	1000 g	1
code 0833	CL211 summer	260 g	1
code 0834	CL211 summer	520 g	1
code 0830	CL211 summer	1000 g	1

Thinner/tools cleaning	Thinner percentage	Mixing ratio by volume	Pot Life at 20°C	Recoatibility at 20°C	Coverage	Tools
Epoxy Thinner	5 %	2:1	2 h	between 2-3 h	8-9 mq/L	



package 520 g

## NAUTILUS DRIVE ANTIFOULING

Antifouling paint for shafts, propellers, flaps, stern drives, surface drives. First coat of antifouling has to be applied between 2 or 3 hours after the Drive Primer application. If the primer was applied the day before the surface needs to be lightly sanded with 3M Scotch Brite. Second coat of antifouling can be applied after 18-24 hours.

Launch can take place after at least 24 hours and within 10 days.

article	color	package	pieces in a box
code 0837	light grey	250 ml	6
code 0842	black	250 ml	6

Thinner/tools cleaning	Thinner percentage	Dustdry at 20°C	Touch dry at 20°C	Recoatibility	Coverage	Tools
Nautilus Antifouling Thinner	5 %	20 minutes	2 h	12-24 h	8-9 mq/L	



light grey black

## NAUTILUS SEALMAST55

Two component elastic system, low expansion. Ideal to seal the through-mast of a sailing boat, to create the perfect interface with the opening. It prevents water seepages and equally distributes the pressure without friction peaks, avoiding any kind of stress on the deck.

article	color	package	pieces in a box
code 0973	amber	931g - 843 ml	6

Mixing ratio by weight	Pot life at 20°C	Drying-gel time 25°C (15 ml, 6 mm)	Tools
3:1	10 - 15'	2-3 h	



# NAUTILUS VARNISHES

## NAUTILUS TWO PACK VARNISH GLOSS and SATIN

Polyurethane two pack varnish, gloss or satin. Extremely versatile with UV filters. With its high plasticity enhances the grain of the wood. Suitable for mast, boom, bowsprit, handrail and wherever a strong, beautiful and easy to apply protection is needed. Stir well, make sure to remove the material deposited on the bottom of the can, wait 10 minutes, add Nautilus Polyurethane thinner by 10 to 20%, mix well and apply. Before the application of the following coats always sand with paper 280/360, apply at least 2-3 coats to get a long-lasting caramel effect. It can be applied on old one component paints if they were applied at least 4 - 6 months earlier. We recommend to test it on a small surface. On new wood or renewed wood use 10 10 CFS or 10 10 UV as primer.

article	package	pieces in a box
code 0850	gloss 750 ml	6
code 0852	satin 750 ml	6

Mixing ratio by volume	Pot life after mixing A+B at 20°C	Touch dry at 20°C	Drying times at 20°C	Thinner/tools cleaning
2:1	6h	3 h	16 h	Nautilus Polyurethane Thinner

Thinner percentage	Dustdry at 20°C	Recoatibility at 20°C	Coverage
brush / roller 10%	1 h	24 h	13-15 mq/L



## NAUTILUS H.B.

Two pack epoxy products specific for bilges or for surface protection. White color. It is fire retardant if applied in engine rooms, odorless it doesn't release toxic vapours in presence of flames. With a high hiding power, it is perfectly visible even in dark areas. Once dry it becomes oil, grease and dirt repellent. It can overcoat old paints as it doesn't contain any solvent and for this reason it doesn't remove them; before applying it sand the surface in order to remove weak parts. Apply by brush, fine thooted spatula or short haired roller.

article	package	pieces in a box
code 0861	1 kg	9

Mixing ratio by weight	Pot Life at 20°C	Drying times at 20°C	Coverage
5:1	25 - 35 minutes	5 h	1-2 mq/L



white





# NAUTILUS DECK SEAL



## NAUTILUS DECK SEAL

MS polymer rubber to fill teak decks seams.  
It is extremely elastic, after drying it maintains for years its efficacy.  
It resists to the simultaneous action of water, sun, wind.  
A coat of Primer Deck Seal is required before the application of product.

article	color	package	pieces in a box
code 0908	white	600 ml	12
code 0909	black	600 ml	12
code 0910	gray	600 ml	12
code 0911	professional applicator for package 600 ml		1

Drying times at 20°C	Coverage	Tools
2 - 4 mm every 24 hours in depth	600 cm <sup>3</sup>	



white  black  gray 

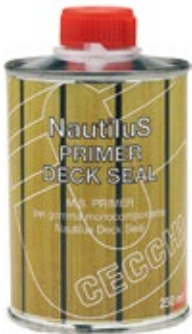


## NAUTILUS PRIMER DECK SEAL

Primer for teak to be applied at least 2 hours before Nautilus Deck Seal.

article	package	pieces in a box
code 0903	250 ml	6

Drying times at 20°C	Coverage	Tools
2 h	5-6 % of the volume of the rubber	





# NAUTILUS EPOXY FILLERS

## NAUTILUS EPOXY LIGHT FILLER

Two pack epoxy light filler, high thickness and low specific weight (0,6 kg/liter), extremely resistant, easy to sand.  
Use above or under the water line, suitable for osmosis cycle.  
Fill up high thickness without sagging. Fast hardener available.  
Mixing ratio by weight of the two components 2:1.

article	package	pieces in a box
code 0204	3 L	6

Mixing ratio by weight	Pot Life at 20°C	Recoatibility at 20°C	Coverage (medium thickness 500 microns)	Tools
2:1	1 h	12-14 h	10 mq/ 6 L	 





info@cecchi.it

23

## NAUTILUS FAST EPOXY LIGHT FILLER

Two pack epoxy light, with same features of the Nautilus Light Filler but with a very fast drying.  
Suitable for small damage repairs as well as integration to a type of work that needs to reduce the time of application.  
Sandable after 2 hours, and recoated with varnish or antifouling (temperature 20-25°C).

article	package	pieces in a box
code 0201	0,8 L (480 g)	6
code 0205	3 L	6



Mixing ratio by weight	Pot Life at 20°C	Recoatibility at 20°C	Tools
2:1	30 minutes	2-4 h	 



## NAUTILUS FAST EPOXY FINE FILLER

Two pack epoxy fine filler, suitable for osmosis protection, extremely dense, resistant, smooth and fast to dry. Sandable after 2 hours.  
Recoatibility with varnish or antifouling after 2-4 hours (at 20-25°C)  
It is perfectly integrated with the C-Systems 10 10 CFS cycle.  
Ideal for osmosis craters when the complete cycle needs to be postponed. Open the craters, wash, dry, apply directly.

article	package	pieces in a box
code 0212	600 g	6

Mixing ratio by weight	Pot Life at 20°C	Recoatibility at 20°C	Tools
2:1	15 minutes	2-4 h	 



# THINNERS

## WHITE SPIRIT

Specific thinner formulated for one-component SPINNAKER varnishes. Dilute 10-40% on the first coat only according to the hardness and the features of the wood (e.g.: teak, iroko). Following coats add 2/4% if necessary. Suitable for tools cleaning.

article	package	pieces in a box
code 2540	500 ml	9



## C-EPOXY THINNER

Specific thinner for NAUTILUS EPOXY PRIMER and also for 10 10 Classic if applied on wet or damaged woods. Dilute 50% and let the surface dry (some days). Properly sand; following coat of 10 10 Classic doesn't have to be diluted.

article	package	pieces in a box
code 1054	500 ml	9



## NAUTILUS POLYURETHANE THINNER

Specific thinner for NAUTILUS TWO PACK VARNISH (gloss or satin), NAUTILUS POLYURETHANE ENAMEL dilute from 10 to 30 - 35% and Deco-deck GTS. Ideal for the cleaning of the tools.

article	package	pieces in a box
code 0854	500 ml	9



## SPINNAKER POLYURETHANE 2 THINNER

Polyurethane thinner specific for SPINNAKER POLYURETHANE 2. Dilute 5/10% max. Ideal for the cleaning of the tools.

article	package	pieces in a box
code 0136	500 ml	9



## ANTIFOULING THINNER

Specific thinner for NAUTILUS SELF POLISHING (max 5%), Classic Primer (max 5-10%) and Drive Antifouling (some drops). Essential for the cleaning of the tools.

article	package	pieces in a box
code 0844	500 ml	9





# DECO-DECK

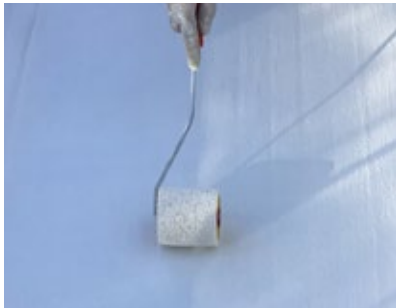
## DECO-DECK WB Water Based

Deco-Deck WB is a one component water based polyurethane elastic coating.  
Waterproofing protection in case of seepages.  
Deco-Deck WB protects and repairs the deckhouse and the fly.  
Colour: white, also colorable at choice.  
Elongation: 140 – 160%.  
Permeable to the moisture of the support, when or even if, up to and over 8 g of water/sqmt in 24 h.  
Easy application on wood, fiberglass, metal and coverings, such as TBS, Treadmaster.  
If necessary prepare the surface with 1010 CFS and/or Nautilus Epoxy Primer.  
Excellent antiskid finishing adding on a limited area a final coat with Antiskid Powder.  
Coverage, depending on the condition of the surface, 1,5 sqmt/L completed work.  
Application by roller or brush.  
Condition during the application, 5°C to + 30°C.  
Add 5 - 10 % of water on the first coat.  
Recoatability with Deco Deck GTS (Gloss Transparent Solvent based) or with Nautilus Polyurethane Enamel.



article	package	color	pieces in a box
code 0501	1 L	white	4

Thinner/tools cleaning	Coverage	Dustdry	Recoatability at 18°C	Tools
Demineralized water	1,5 sqmt/L finished work	4-6 h	18-24 h	



## DECO-DECK GTS (Gloss Transparent Solvent based)

Deco-deck GTS (Gloss Transparent Solvent based), one component high gloss elastic coating (alcoholic, solvent based), UV resistant.  
High elasticity to solve and reduce the maintenance of exposed woods.  
Deco-deck GTS solves problems of seepages enhancing the beauty of the deck.  
Permeable to the moisture of the support, when or even if, up to and over 8 g of water/sqmt in 24 h.  
Ideal for handrails, partners, masts and wherever there is stress and traffic.  
Elongation: more than 300%.  
Condition during the application, 5°C to + 30°C.  
Sea water and fresh water resistant.  
Application by roller or brush.  
Dilution with Nautilus Polyurethane Thinner.  
Deco-deck GTS can be applied on transparent varnish in good condition, sand-down the surface before the application.  
Deco Deck GTS (Gloss Transparent Solvent based) can be also applied as final coat on Deco Deck WB. It can be colored with our Colour Paste.



article	package	color	pieces in a box
code 0510	1 L	transparent	6

Thinner/tools cleaning	Coverage	Dustdry	Recoatability at 18°C	Tools
Nautilus Polyurethane Thinner	10-12 sqmt/L	6 h	18-24 h	



## BOAT CARE

### TEAK & WOOD CLEANER

Cleaner in powder form for a perfect maintenance of teak, iroko, mahogany and woods in general.

Cleans and maintains all types of unpainted woods.

Teak & Wood Cleaner - cleaner powder, it quickly and easily cleans and restores the color of the grain of the wood.

The regular use of Teak & Wood Cleaner gives a neat and flawless look to the wood, ensuring a long-lasting life of not treated woods.

Also ideal for bleaching moisture spots on bare wood.

The use of our Grey Soft Brush is recommended.

Coverage: 10 - 15 sqmt/package

article	package	pieces in a box
code 0920	600 g	9



### FIBERGLASS CLEANER

Fiberglass Cleaner and stain remover in powder form.

Its formula removes dirt, spots, rust, fingerprints and black stripes giving a shiny look to the gelcoat.

It is ideal for non-slip surfaces.

The use of our Orange Medium Brush is recommended.

Coverage: 10 - 15 sqmt/package

article	package	pieces in a box
code 0930	600 g	9



### TEAK OIL Water Based

Specific protective treatment for decks. Also suitable for not treated wood of chairs, tables and gazebos.

Perfectly clean the surface with Nautilus Teak & Wood Cleaner before applying it and make sure that the color of the wood color is uniform, without spots or leftover of old applications.

Its lightly amber shade highlights the grain and beauty of teak. Ideal for the maintenance of natural wood.

Coverage: 10 - 15 sqmt/L

article	package	pieces in a box
code 0925	1 L	12



## BOAT CARE

### INVISIBLE DECK PROTECTION

Nanotechnology Invisible Protection for teak decks and woods in general. Invisible Deck Protection is a water-based liquid that does not damage the deck-caulking. It protects without changing the color, the teak deck and other types of not treated woods.

Before applying it, perfectly clean the surface with Teak & Wood Cleaner, if necessary, repeat the process several times to obtain a surface with a homogeneous color. Invisible Deck Protection must be applied on perfectly dry woods.

It is based on nanotechnology products, it creates an invisible barrier that repels water and dirt.

Thanks to the nanotechnology, it saturates the pores of the wood without creating any thickness and facilitates the perspiration of the surface.

Invisible Deck Protection is odourless, not flammable and solvent free.

Coverage: 6 - 8 sqmt/L based on the porosity of the surface

article	package	pieces in a box
code 0928	1 L	12



### CLOTH PROTECTION

Eco-friendly waterproof treatment for fabrics and absorbing surfaces

Nanotechnology based water treatment.

Invisible protective for awnings, bimini, technical clothing, fabrics, leather seats, curtains and leather ...

Application is very easy with its spray nozzle, it is odourless and dries quickly. After its application the surface is water-repellent.

Once applied it doesn't alter the breathability of the surface.

Surfaces after the application are more durable and restored, it repels dirt as well.

Coverage: 6 - 8 sqmt/L based on the porosity of the surface

article	package	pieces in a box
code 0929	500 ml	8



## NAUTILUS REMOVERS

### NAUTILUS RUST REMOVER

Rust remover for steel, iron and cast iron. Prepare the surface of the cast iron keels with a grinding machine, pass several times Nautilus Rust Remover and leave it to dissolve the rust in pittings and porosities to restore the surface. Repeat the application and rinse thoroughly the surface with water or better with a high pressure water machine. Wipe the surface with a rag or a paper to remove the excess of water inside the cavities and after about one hour start the Nautilus anticorrosive cycle.

article	package	pieces in a box
code 0885	750 ml	6

### NAUTILUS PAINT REMOVER

Nautilus Paint remover removes varnishes from wood and paints from metal surfaces.

Apply generously Nautilus Paint remover, let it work till the surface get rough.

Apply another coat to carry on with its action. Cut in half the bristles of the brush and remove the product from the surface. If necessary apply another coat of Nautilus Paint remover to perfectly clean the grain of the wood.

A brush with cut bristles removes the old film without scratching the wood.

article	package	pieces in a box
code 0881	750 ml	6





## FABRICS AND TAPES

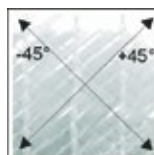
### BIAXIAL GLASS E +/- 45 H.T. 300 g

article	width	length
code 9631	10 cm	10 m
code 9632	15 cm	10 m
code 9640	63,5 cm	10 m
code 9641	127 cm	10 m
	127 cm	150 m



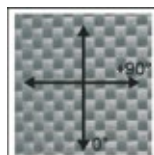
### BIAXIAL GLASS E +/- 45 H.T. 450 g

article	width	length
code 9650	63,5 cm	10 m
code 9651	127 cm	10 m
	127 cm	150 m



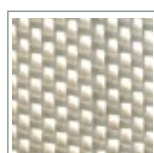
### PLAN BORDERED GLASS 220 g

article	width	length
code 9700	5 cm	10 m
code 9701	10 cm	10 m
code 9703	15 cm	10 m



### INVISIBLE GLASS 200 g

article	width	length
code 9704	100 cm	10 m



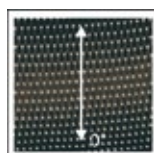
### UNIDIRECTIONAL CARBON 175 g

article	width	length
code 9801	5 cm	upon request
code 9802	10 cm	upon request
code 9803	15 cm	upon request
code 9805	20 cm	upon request



### UNIDIRECTIONAL CARBON 330 g

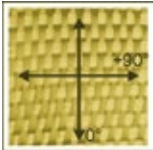
article	width	length
code 9806	20 cm	upon request



# FABRICS AND TAPES

## ARAMIDIC BORDERED PLAN 170 g

article	width	length
code 9850	5 cm	upon request
code 9851	17 cm	upon request



## PEEL PLY

article	width	length
code 2614	15 cm	10 m
code 2617	25 cm	10 m
code 2615	80 cm	10 m
	80 cm	100 m



## CAULKING COTTON

article	diameter	length	weight
code 9901	3 mm	220 m	1 kg
code 9902	6 mm	70 m	1 kg



## EXPANDED PVC (smooth)

article	sizes	thickness	density
code 2616	95 X 205 cm	10 mm	90 kg/m <sup>3</sup>
code 2619	85 X 120 cm	10 mm	130 kg/m <sup>3</sup>



## EXPANDED PVC (squared)

article	sizes	thickness	density
code 2618	102 X 108 cm	10 mm	75 kg/m <sup>3</sup>



# ACCESSORIES

## ROLLER COVERS

Roller covers are perfect for the application of our varnishes, C-Systems resins and Nautilus range. During the application is suggested the use of a roller tray.

article	type	length	pieces for box
code 8860	gel roller	10 cm	10
code 8861	gel "thick" roller	10 cm	10
code 8862	gel "thick" roller	15 cm	10



## ROLLER HANDLES

Handles for 10 and 15 cm gel roller. Ergonomic, made in plastic and chromed steel.

article	type	pieces for box
code 8863	roller 10 e 15 cm	1



## FOAM ROLLER COVERS FOR ENAMEL

Special roller cover, high density foam, ideal for the application of the enamel on broad sides or wide surfaces, excellent result and double coverage if compared with the application by spray gun. Length 18 cm, solvent resistant.

article	type	pieces for box
code 8832	foam roller	1



## ROLLER HANDLES FOR ENAMEL

Handles specific for the enamel foam roller. Specific for the application of NAUTLIUS Polyurethane Enamel.

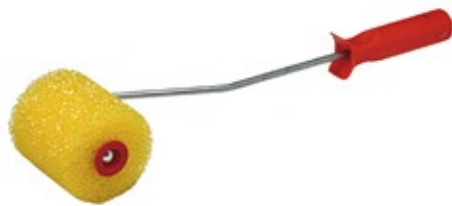
article	type	pieces for box
code 8833	roller handle	1



## ROLLER COVER DECO-DECK WB

Foam roller cover with handle.

article	type	pieces for box
code 0530	roller handle	1



## SPIKED ROLLERS

Those rollers are ideal for rolling out bubbles of air during the application of epoxy resin and fabrics, suitable when more layers of fabric are applied. Two types longitudinal (L profile) and trasverse (T profile) Ergonomic, made in plastic and chromed steel.

article	type	length	pieces for box
code 8821	profile L - longitudinal	7 cm	1
code 8822	profile T - trasverse	7 cm	1





## ACCESSORIES

### SMOOTH SPATULA

Package of 4 pieces of various dimensions.  
Ideal for the application of epoxy fillers or epoxy resin when mixed with its additives.

article	type	set
code 8806	smooth spatula	4

### THOOTHED SPATULA

Ideal for the application of fillers.  
Trapeziodal 12 cm (fine or large); 20 cm (fine).  
Fine type has a tooth of 1,5 mm, large type of 3 mm.

article	type	width	pieces
code 8804	fine	12 cm	1
code 8811	large	12 cm	1

### SMOOTH SPATULA

Flexible spatula for the application of peelply on the glass and carbon fabrics.

article	type	width	pieces
code 8851	smooth	cm 12	1
code 8852	set smooth	cm 6-10-12	1

### MANUAL APPLICATOR FOR EPOXY MIX

For the application of 400 ml duo-pack cartridge C-Epoxy Mix 110, 130, 140. Available 1:1 (for Epoxy Mix 110) , 2:1 (for Epoxy Mix 130 and 140) mixing ratio.

article	type	pieces
code 0690	for Epoxy MIX 110	1
code 0692	for Epoxy MIX 130 e 140	1

### EPOXY APPLICATOR NOZZLE

Nozzle for manual applicator Epoxy Mix 110, 130 and 140.

article	type	pieces
code 0691	nozzle	1

### MANUAL APPLICATOR FOR DECK SEAL 600 ml

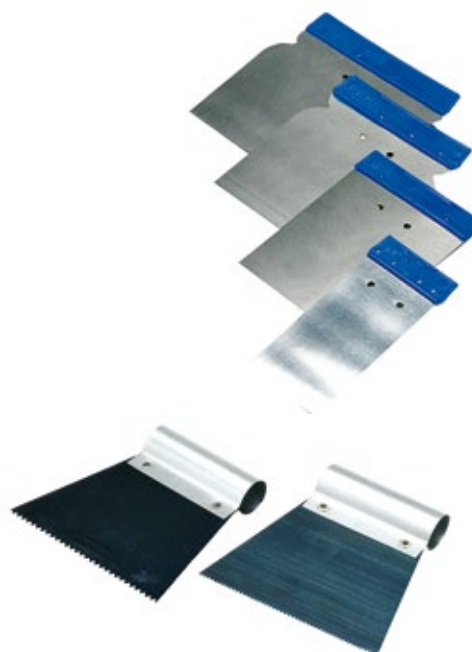
Applicator for 600 ml Deck Seal rubber sausages.

article	type	pieces
code 0911	for Deck Seal 600 ml	1

### EMPTY CARTRIDGES

Empty cartridge 310 ml volume

article	type	pieces
code 2485	empty cartridge	10



## ACCESSORIES

### SPOUT FOR VARNISH

Transparent plastic spout for varnish cans, practical and functional.

article	type	pieces
code 8853	diam. 11 cm	10



### TRAY

Mainly used for the application of the epoxy resin C-Systems (already mixed in a cup), it increases the pot life of the mixture avoiding the exothermic peak. It can be used many times.

article	dimensions	pieces
code 2000	27 x 34 cm	1
code 2001	32 x 34 cm	1



### PLASTIC CANS

Used to prepare mix of epoxy resins, varnishes, to clean brushes.

The complete set is composed of 5 pieces:  
3 x 350 ml, 1 x 750 ml, 1 x 1000 ml.

article	dimensions	pieces
code 2007	different sizes	5



### GRADUATED CONTAINERS WITH CAP

Transparent graduated containers for enamel and varnish. High quality, they can be reused, mixing ratio by volume (2:1; 3:1; 4:1; 5:1)

article	type	pieces
code 8823	Set of containers with cap	3
code 8824	400 ml with cap	1
code 8825	650 ml with cap	1
code 8826	1300 ml with cap	1
code 8839	2300 ml with cap	1



### MIXER

Harmonic stainless steel mixer, high resistance. For a perfect and homogeneous mix of the hardener when added to component A of STEEL BLUE, Core Bond and Gel Coat Light.

article	type	piece
code 8845	6,5 x 21 cm	1



## ACCESSORIES

### DISPOSABLE BRUSHES

Disposable brushes extremely efficient and performing.  
Suitable for many applications on small surfaces.

article	dimensions	pieces
code 8810	Ø 10 mm	12



### BRUSHES

Pure bristle brushes with metal ring, various widths

article	type	widths mm	pieces
code 8828	S300 n.20	20	1
code 8840	S300 n.30	30	1
code 8836	S300 n.40	40	1
code 8841	S300 n.50	50	1
code 8827	S300 n.60	60	1
code 8880	S300 n.80	80	1
code 8842	S400 n.50	50	1
code 8837	S400 n.60	60	1



### ANTI DUST CLOTH

Essential after the application of the varnish or after sanding to remove any rest of dust.

article	type	pieces
code 0430	cloth	3



### WOODEN STIRRERS

Useful for mixing the epoxy resin (component A+B).  
On the stirrer there is a measuring scale for dosing the resin and its components.

article	length	pieces
code 8807	23 cm	3
code 8817	30 cm	2



### CONE SHAPED PAPER FILTER

Filter for varnish, mesh opening 1000, 190 micron,  
diameter 16 cm.

article	type	pieces
code 8829	unit	1
code 8830	set	10





## ACCESSORIES

### 3M TAPE

471 Black tape thanks to its properties provides straighter lines when masking; very versatile and resistant.  
2090 Blue is a multisurface tape, easy to apply and remove. They deliver sharp lines.

article	type	length	width
code 9920	3M 471 black	25 mm	33 m
code 9921	3M 2090 blue	19 mm	66 m



### 3M SCOTCH BRITE SPONGE

Non-scratch sponge, on one side it's a scouring pad, on the other side it's a cellulose sponge.

article	type	dimensions	pieces
code 8818	Scotch Brite 3M	10x17x7,5 cm	1



### ABRASIVE PAD

Abrasive pad 3M thickness 1,8 cm

article	type	dimensions	pieces
code 8850	Abrasive pad 3M	9,5x16x1,8 cm	1



### WINDOW SQUEEGEE

Windows squeegee with sponge 25 cm. It will make the cleaning of your hull faster and easier.

article	type	pieces
code 8874	sponge 25 cm	1



### BRUSHES

Deck and hull brushes. Available two different textures, SOFT and MEDIUM  
Telescoping handles (91 and 182 cm).

article	type	pieces
code 8871	DM130 Orange Brush - MEDIUM	1
code 8870	DM120 Grey Brush - SOFT	1
code 8872	DM454 Telescoping handle	1



### SAFETY GOOGLES

Durable eyewear, a perfect protection from dust.  
Polycarbonate construction with over-the-glass coverage, reliable and safe.

article	type	pieces
code 8808	polycarbonate	1



## ACCESSORIES

### VALVED RESPIRATOR 3M 9914

Useful during the application of varnishes and epoxy resins.  
High protection against low levels of fine dust, mists and solvents.

article	type	pieces
code 8820	3M 9914	1



### GAS/VAPOUR AND PARTICULATE RESPIRATOR 3M 4251

Respirator with integral filters. Protection against gases, vapours and particulate. Two large carbon filters. Face made with non allergenic material, with adjustable head cradle. Parabolic exhalation valve provides easier breathing. Replace after 28 days or if damaged.

article	type	pieces
code 8838	3M 4251	1



### DISPOSABLE PROTECTIVE COVERALL SAFETY WORK WEAR

Protective coverall 4545 made of lightweight, with breathable material. Knit cuffs provide a soft wrist closure. Two-way zipper. Comfortable. Flame resistant treatment offers a secondary protection against heat and flame.

article	type	pieces
code 0022	L - XL - XXL	1



### SKINDER – MOISTURE DETECTOR

Moisture detector for wood and fiberglass. Probe supplied with the detector for the collection of relative humidity and temperature and laser probe for surface temperature.

article	dimensions	pieces
code 10005	SKINDER	1
code 10006	STYLE PROBE	1
code 10007	LASER PROBE	1



## DVD PROMOTION

### "WORK WITH EPOXY RESIN AND OSMOSIS REPAIR"

Video no. 1 (yellow cover) - 55 minutes  
How to use C-Systems epoxy resin on wooden boats.  
Osmosis repair of fiberglass boats... and more.

### "LONGITUDINAL PLANKING WITH EPOXY RESIN"

Video no. 2 (red cover) - 90 minutes  
Complete cycle of C-Systems applied on wooden boat... and more.

### "VARNISH AND WORK ON A BOAT"

Video no. 3 (blue cover) - 150 minutes  
Complete cycle of varnish application on a fiberglass boat... and more.

article	set
code 0020	DVD n°1 + DVD n°2 + DVD n°3





## Digital moisture detector for wood and fiberglass Measurement of surface temperature and air temperature Measurement of air humidity

Before executing whichever type of working on boats in fiberglass or wood it is necessary to control the percentage of moisture of the hull. The presence of moisture could make useless whichever good work of restructure or repair since the presence of water under moisture shape in the hull, in the long run, could prejudice application of the epoxy resin, bonding, filling and varnishing cycle.

That's why the use of the moisture detector **SKINDER** is indispensable to assure a good result of the work in the preliminary phase. **SKINDER** is an instrument that allows the measurement of moisture in the wood and in fiberglass without damaging the surfaces. **SKINDER** measures also relative air humidity (U.R.), habit temperature and the temperature of the surface to deal. All these characteristics are in the palm of the hand and they are carried wherever you want.

The moisture detection (H<sub>2</sub>O) in the fiberglass or in the wood (plywood, solid wood, crossed wood, plywood and solid wood overlapped etc.), happens for principle of conductivity, for moisture transmission between the two rubber supports placed in the below part of the instrument and laid to the surface to examine.

### Wood moisture

In accordance to Lloyd's Register, R.I.N.A. and other Registers, wood moisture is either equal or lower than 12% or 15% (= < 12 - 15%). For higher values, endurance loss and lower ultimate tensile stress may occur: the latest decreases by higher moisture rates.

Higher moisture rates lead to dry rot, fungosity, butt rot, bluing and breaking.

Wood volume increase means moisture absorption; wood volume decrease means moisture loss: it also means to reveal the jointing of the boards, the screw and riveting plugs. For

its effect, riveting, bolts and screw become rusty, oxidized and corroded.

Thanks to the modern chemical techniques (**C-Systems 10 10 CFS**, **Nautilus Epoxy HB** etc), wood, which is 3-times more resistant than steel with the same weight, turns into a light, resistant, dynamic, cheap and extremely long-lasting material requiring seldom servicing: that is possible with proper projects (like the shipwrights' ones) combining design, functionality and moisture rates Registers contemplate.

Any repairs and/or restorations must be accomplished in full respect of the above criteria.

### Fiberglass moisture

Moisture in fiberglass means starting of osmosis or potential osmosis and as it occurs with wood as well, loss of fatigue strenght and decreasing ultimate tensile stress. The highest moisture rate in fiberglass is 0 (zero). Fiberglass has replaced many materials for its malleable, cheap and seldom servicing: indeed, it has lead to a worldwide yachting.

To obtain such peculiarities, technical criteria have to be kept in mind (professionalism, good projects, correct restorations, respect of mixing and lamination phases and temperatures); it must contain no moisture.

Moisture is the cause of osmosis: throught the gelcoat, it dissolves the defective residues of a non-good polyester catalysis (or of a polyester that is not adequate to that purpose) and it creates a viscous liquid with a strong acetic scent, which sea water and fresh water in particular further dilutes to the same density.

Volume increases and triggers off the well-known swells on the hull - someone considers this an endless circle.





# SKINDER

## Before starting...

Be sure the surfaces are clean, dry and without any greasiness. Temperature survey is recommended higher than 10° C. Lower temperatures record slightly decreased values (the instrument registers a more optimistic temperature).

For a more reliable reading of heartwood surfaces, lay the instrument parallel to the wood vein (replacing the transversal position).

It does not occur with plywood or it may be imperceptible since wood grains are crossed.

## How to use Skinder

It is extremely simple: results and reading are immediate; data are complete. Lay **SKINDER** - moisture detector - on the board area to be explored: it takes the current moisture percentage of the board. It is also easy to find out areas with a bigger moisture percentage (close to sea plugs, jettisons, log, portholes): it might even mean that when those openings were carved the surrounding areas were not properly treated. After measuring many parts and writing the values taken on the hull, it is possible to draw a "geographical map" of the moisture. It is important to mark the bearing point and lay the **SKINDER** on the same position in order to have a correct reading of the surface. **SKINDER** - moisture detector - plays a meaningful role both during the craft sale (you are more confident of what you are going to buy and you are reliable when you are selling) and the estimate of their servicing (it points out where a harder work is necessary). **SKINDER** has two switches "soft touch", the first one on the right for the starting (ON/automatic off), the second on the left for choosing the function to use (circle with circular arrow).

## SWITCH ON THE RIGHT - START

Switch on the Skinder pressing the right button "ON". After about 4 minutes, if not pressed again in the meantime, **SKINDER** automatically switches off. This automatic off avoids a useless consumption of the battery.

## SWITCH ON THE LEFT - SCALE CHOICE

Press the button with the circular arrow to choose the scale you need.

Depending on the surface where we want to make the measurement, we will choose one of the following surface (pressing repeatedly the button):

### "Wood S.W." (wood saltwater)

Recommended for wooden crafts of sea water (salt water).

For the naval register RINA and LLOYD's Register, the acceptable wood moisture must be between 12 and 15%.

We read the percentage of moisture in the big number on the left. This percentage goes from 0 to 100. The little number on the right, instead, is the indication of average

value in weight of water content per cubic meter in % of the material examined.

### "Wood F.W." (wood freshwater)

Recommended for wooden crafts of fresh water and estimate of those kinds of wood (plywood, heartwood, wood boards) used for repairs, constructions and changes. The value of the measurement must be below 12 and 15%.

### "High Sensibility." (wood high sensibility)

It amplifies the signal and it helps in finding out deep seepages. It is the most sensitive, it can measure over 15 - 20 mm deep.

### "Fiber GRP" (Fiber Glass)

Recommended for fiberglass crafts in fresh or salt water. The big number value on the left shows the moisture percentage in the fiberglass and must be about 18%. The little number on the right instead will be about 1% and indicates the medium content of water in fiberglass.

### "Fiber GRP HS" (Fiber Glass HS)

In this scale you measure fiberglass over 15-20 mm deep. This scale is used to check osmosis. The maximum value on the left in this scale must be 30%

### AIR TEMPERATURE C° "CENT. AIR" (DEG AIR °C)

With **SKINDER** it is possible to measure air temperature. For this value we have to connect the **optional long probe** to the Skinder in the plug on the left side of the instrument.

We can read the temperature of the air directly on the digital screen.

It's the same probe used to reveal also air humidity.

### Percentage of humidity in the air

#### "% R.H." (% R.H.)

Connecting the long probe in the plug on the left and choosing this scale we are able to measure the percentage of humidity in the air. This value is important when we are about to varnish wood or fiberglass surfaces to obtain the best result.

### Function HOLD "H" (memorize)

Skinder is provided with the function Hold, a sliding switch on the left side that memorizes (records) the value the instrument has taken - by any scales.

Hold allows the use in slightly lit areas or in positions where the immediate reading is not possible (the very low parts of the hull, store - room and places hard to get to).

### SURFACE TEMPERATURE C° "CENT BODY"

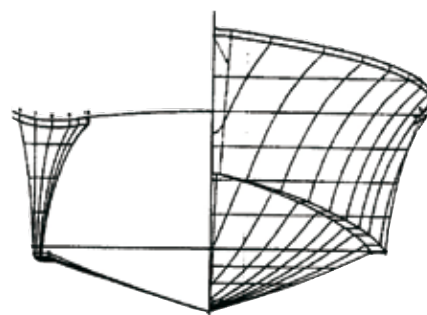
**optional laser probe** for measuring the surface temperature.



## PRODUCTS TO WORK

Which are the products needed to repair the osmosis on a fiberglass hull and/or to refit a wooden hull?

Products	
C-Systems 10 10 CFS	6 kg
Natural Microfibers*	1 l
Mineral Microfibers*	1 kg
Microfiller Powder*	2 l
A20 or A30 Microshield (anti-osmosis additive)	0,6 kg
Nautilus Epoxy Light Filler*	6 l
Nautilus Epoxy Primer	1,3 l
Nautilus Antifouling S.P. Extra Glide	2,3 l



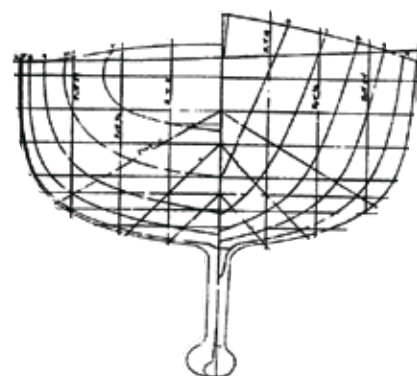
(\*) Products with star can be used as an alternative, depending on the type of the surface (fiberglass or wood) where the application has to be done, to its status and to the width of the craters for the osmosis treatment.

NOTE: the quantity of filler Nautilus Epoxy Light Filler for smoothing a wooden or fiberglass hull has been calculated for a medium thickness of 500 microns (0,5 mm). A higher thickness means that for additional 500 microns we need to add 6 lt more of filler.

### Accessories

- 1 Set of Dosing pumps\*\*
- 1 Roller tray\*\*
- 1 Kit plastic cans\*\* (5 pieces)
- 1 Kit of stirrers
- 1 Roller handle
- 5 Roller covers
- 1 Thooted spatula\*\*
- 1 Kit smooth spatulas\*\*
- 30 Disposable gloves

(\*\*) Those items can be used several times



## ESTIMATION OF THE HULL SURFACE

Motor yacht

$$\text{Hull surface} = \text{LWL} \times (\text{B} + \text{D}) \times 0,85$$

Sailing Boat (Keel type 1)

$$\text{Hull surface} = \text{LWL} \times (\text{B} + \text{D}) \times 0,75$$

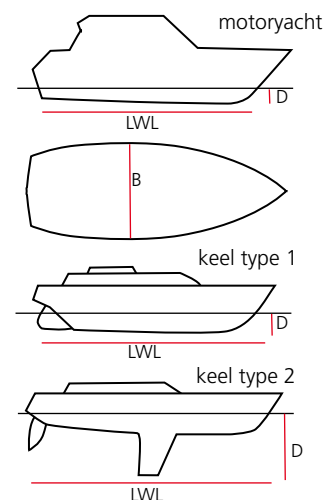
Sailing Boat (Keel type 2)

$$\text{Hull surface} = \text{LWL} \times (\text{B} + \text{D}) \times 0,50$$

LWL: Length Waterline

B: max. breadth

D: draught





*Impossible to improve its quality  
then we redesigned the label*





# notes





SIMPLY

# 10 10<sup>®</sup> CFS



For more information about the application of our products please visit our website:  
**[www.cecchi.it](http://www.cecchi.it)** and watch our video on **YouTube**

[www.cecchi.it](http://www.cecchi.it)



**CECCHI GUSTAVO & C.**

Via Coppino, 253 - 55049 Viareggio (LU)  
tel. +39 0584 383694 - fax +39 0584 395182 - [info@cecchi.it](mailto:info@cecchi.it)



*We donate 1% of our income to the scientific research and no profit associations.*